

Certification and declaration

The **i-trap 50B/E / i-trap 50LED** complies with the EU-directive on machine safety
The unit and spare part components are in full compliance with the CE directive and the WEEE / RoHS directives. The EC declaration of conformity is listed below:

CE declaration of conformity.

We declare, under our responsibility, that the imported product:

Type: **i-trap 50B/E / i-trap 50LED** Insect control unit complies with the following European standards:

- * EN 60335-1 Safety of household and similar electrical equipment. Part 1: General requirements.
- * EN 60335-2/59 Safety of household and similar electrical appliances.
Part 2: Particular requirements for insect killers.
- * EN 55014 Limits and methods of measurement of radio disturbance characteristics of electrical motor-operated and thermal appliances for household and similar purposes, electrical tools and similar electric apparatus.
- * EN 61000-4-5 Surge immunity requirements (1.2/50 µs and 70/100 µs surge)
- * EN 61000-3-2 Electromagnetic compatibility (EMC) Part 3: Limits Section 2: Limits for harmonic current emissions (equipment input current <16 A per phase) (IEC 1000-3-2:1995)

All according to the definition of the Low Voltage Directive 73/23/EEC and the EMC Directive 89/336/EEC

Important warnings

- The appliance is not to be installed by children or persons with reduced physical, sensory or mental capabilities, or lack of experience and knowledge, unless they have been given supervision or instruction.
- Children must be supervised and not to play with the appliance.
- The appliance is to be kept out of reach of children.
- The appliance is not to be used in locations where flammable vapours or explosive dusts are likely to exist.
- If the power cord is damaged, it must be replaced by the manufacturer, its service agent or qualified and licensed electrician in order to avoid a hazard.

Extra attention on the UV Astron LED lamp

The UV Astron LED lamp is developed to guarantee a long a trouble-free lifetime.

The UV Astron LED lamp needs to be cleaned periodically (ideally 4 times per year).

As the UV Astron LED lamps become warmer than the conventional UV fluorescent lamps, they attract more dirt and organic particles on its surface.

These particles block the UV-A light, which will affect the attraction potential of the UV Astron LED lamp. Cleaning them with a soapy detergent is therefore essential.

Recommended Consumables

Pos.	Description	Part number	Amount
3	Glueboard	2.06.0100	1
5	i-trap 50B execution Philips 15 watt UV-A SP	2.04.0690	2
5	i-trap 50E execution Philips 15 Watt UV-A SP Longlife	2.04.0322	2
5	i-trap 50LED execution Astron 15 Watt UV-A LED	2.04.5000	2
7	Starters* ¹	2.08.1001	1

Exploded view

Descriptions of exploded view parts see section B

Position:

1 Cover	4 Ballast* ²	7 Starter* ¹
2 Housing	5 UV-A Lamp	8 Main plug
3 Glueboard	6 Lamp holder	9 Indicator (50E + LED)

Attention

- indoor use only
- for dry areas only
- recycle lamps & starter

*¹ Starter/starter holder (not applicable for units executed with a high frequency ballast or LED lamps)

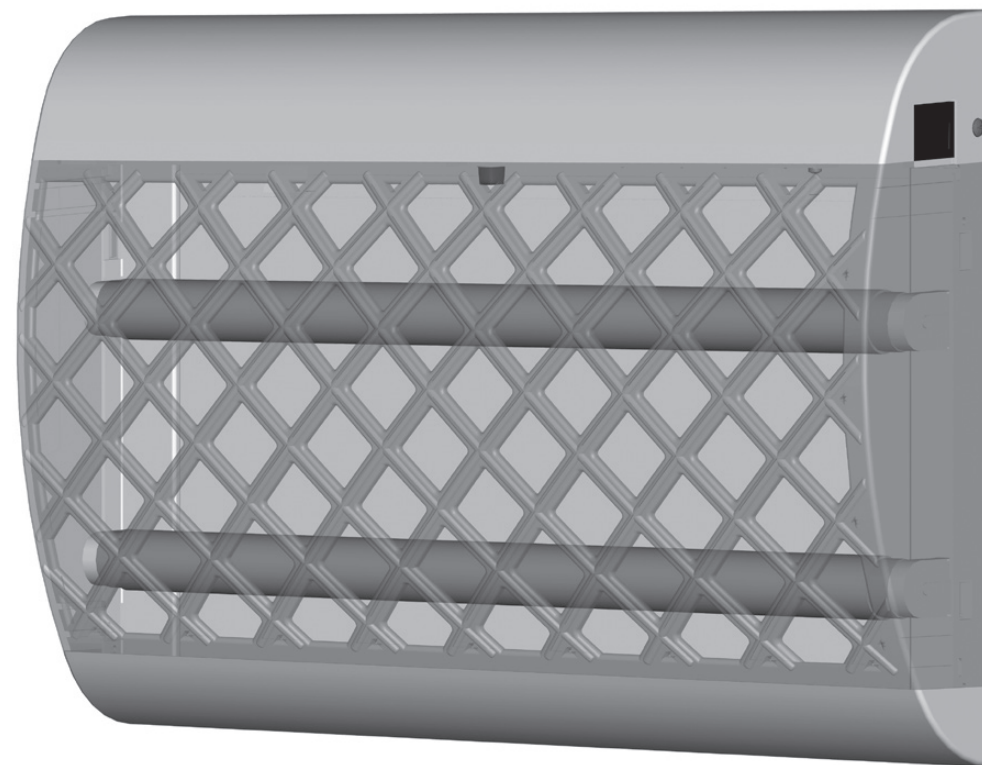
*² i-trap 50 B unit is executed with a magnetic ballast (with starter)

i-trap 50 E unit is executed with a high frequency ballast. (without starter)

i-trap 50 LED unit executed without ballast or starter.

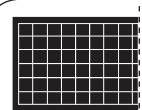
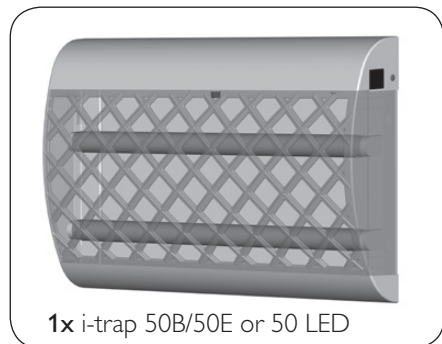
i-trap 50B/50E i-trap 50LED

ENGLISH



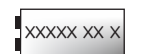
INSTRUCTION MANUAL

A. Unit / Consumables

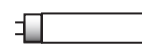


Consumables:

1x glueboard



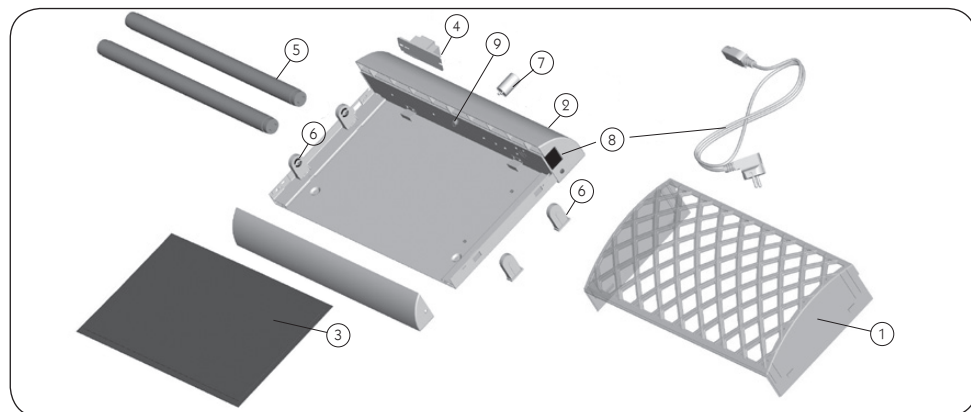
1x starter (50B only)*



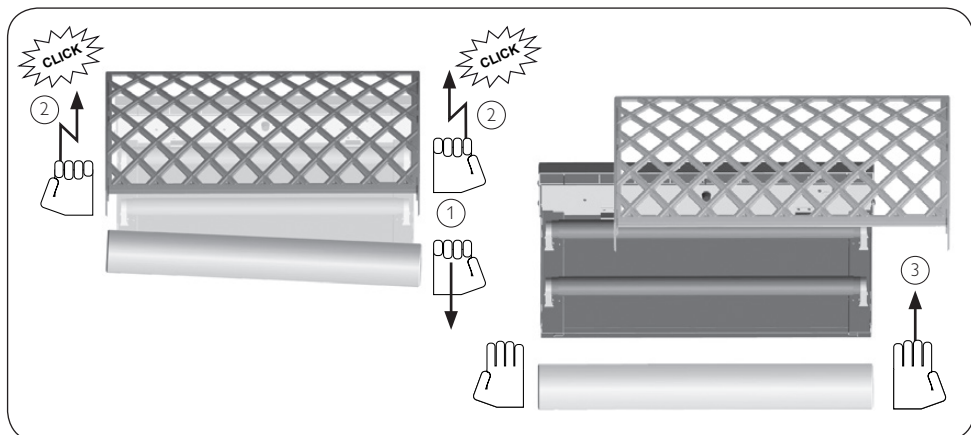
2x 15 watt UV-A

* 50 B is executed with a magnetic ballast and starter circuit.
50 E is executed with a high frequency ballast (no starters).
50 LED is executed without ballast and starters.

B. Exploded view (see explanation on back of this manual)

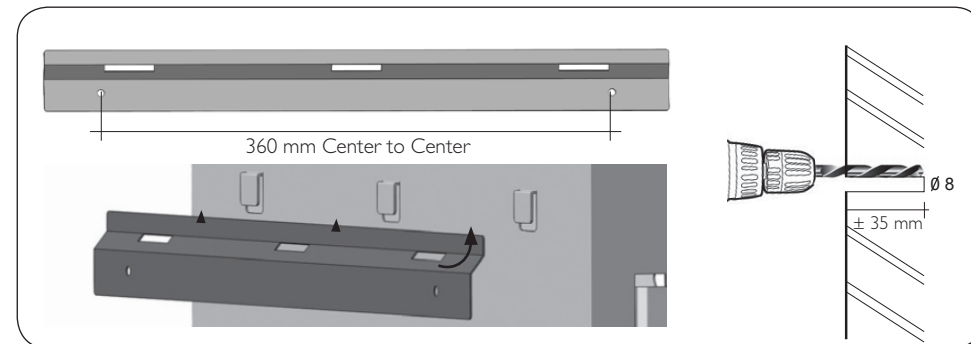


C. Removing/placing Covergrid

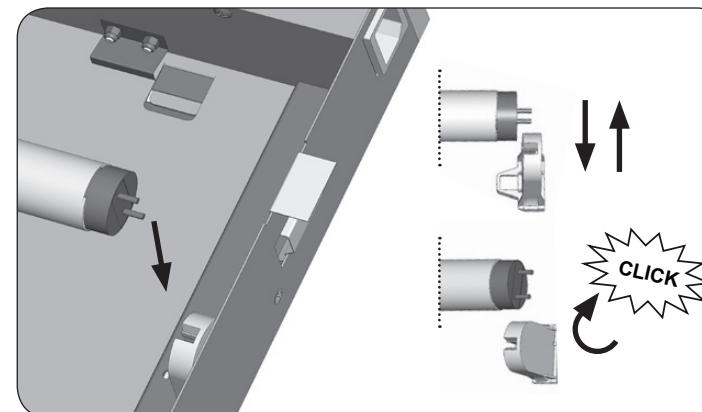


Note: In case of replacement of the lamps use components of the same specifications.
Only use genuine spare-parts for service and maintenance.

D. Wall mounting



E. Lamp installation/replacement

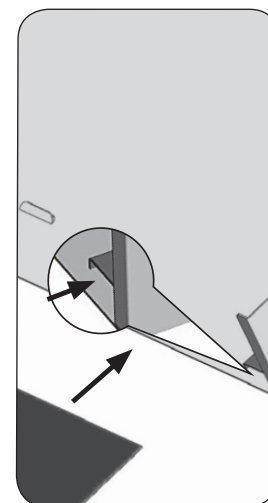


Note:
In case of replacement of the glueboard or lamp, use components of the same specifications.

Only use genuine spare parts for service and maintenance.

LED
This lamp is suitable to be used in emergency luminaires designed for double-capped fluorescent lamp(s)

F. Glueboard install/replace



G. Specifications of the i-trap 50B/50E or 50 LED

Technical name	: i-trap 50B/50E insect control system
Attraction grid	: increases landing behaviour with 30%
Area coverage	: 50 - 80 m ²
Light source	: 2x 15 watt shatterproof UV-A lamps
Type of UV lamps	: UV Lamps RoHS certified
Electrical supply	: 50B : 220-240V ~ 50 Hz - 50E : 110-240V ~ 50/60 Hz : 50LED 100-240V ~ 50-60 Hz
Catch specifications	: Temperature Optimized Glueboard
Power consumption	: 50B : 35W / 50E : 32W / 50LED : 23 W
Weight	: 4 kg
Material	: coated steel, cover and grid made of ABS plastic
Degree of protection	: IP 20 (drip proof)
Guarantee	: 2 year return to base
Int. building norm	: acc. EN 60335-2-59 int. std. for insect traps
Lamp life time (h)	: 50B/50E 9.000 hours - 50LED 25.000 hours
Dimensions	: 470 x 325 x 100 mm (LxWxH)
CE-approval	: yes
Mounting position	: wall mounted
Cable	: included